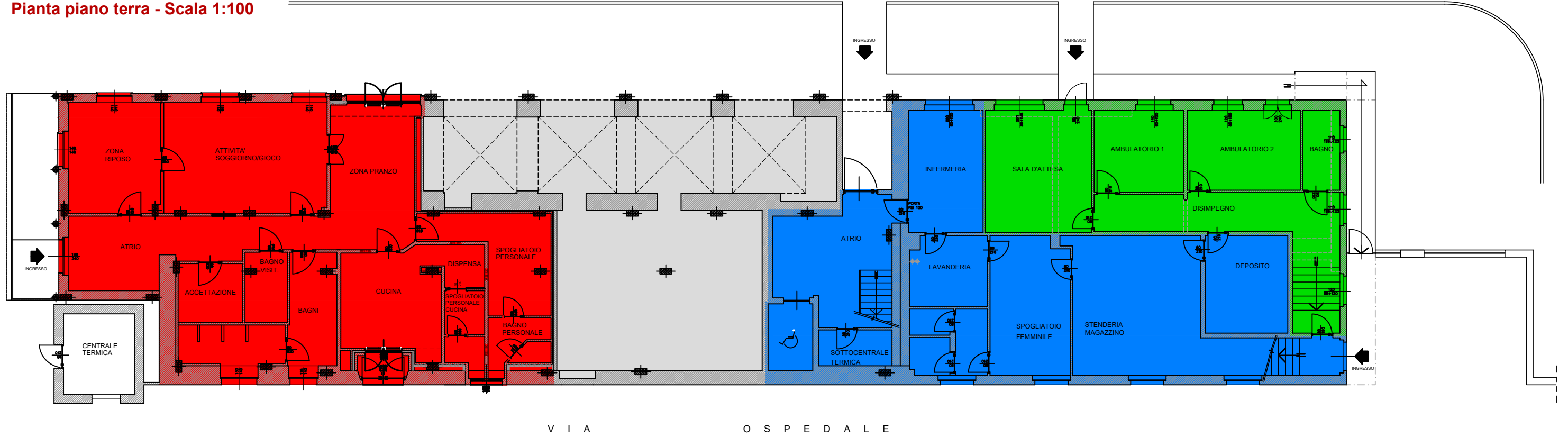
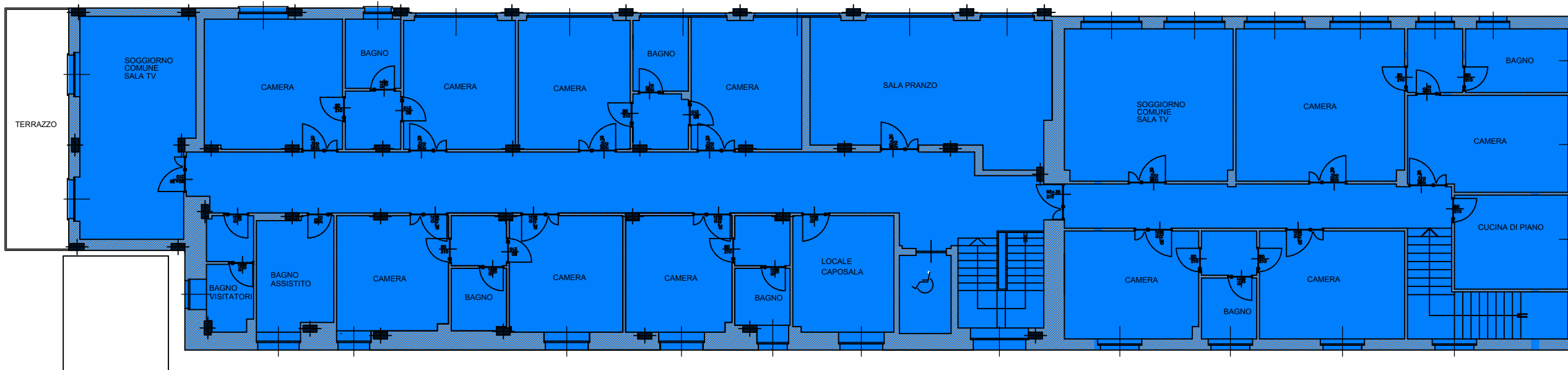


Casa Barbero - Aree di competenza

Pianta piano terra - Scala 1:100



Pianta piano primo - Scala 1:100



Legenda:

	Asilo nido comunale (Sup. 215,00 mq)
	Ambulatori (Sup. 97,00 mq)
	R.A. Casa Barbero (Sup. 824,00 mq)
	Area non utilizzata (Sup. 149,00 mq)